



MAIZE SHELLER MR 20

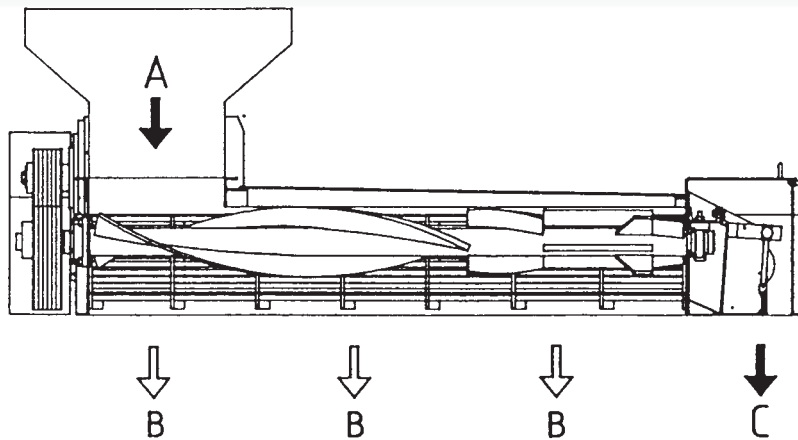
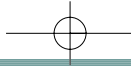


HOURLY CAPACITY...20 t



Heid MR 20/Maize Sheller mounted over a Cimbia/Delta flat bed screen cleaner for the removal of oversize cobs from shelled corn.





A Inlet
B Kernels
C Rachis

Combined Unit Delta cleaner type 191.2/Maize Sheller MR 20

Maize Sheller MR 20

For gentle separating of maize cobs in rachis and kernels.

Design:

- sturdy steel housing with cleaning opening
- forged rotor with ribs
- dam up flap on the end of the rotor
- Sheller cage made of round rods (20 mm dia)
- 1 motor 22 kW incl. mounting bracket and drive

Delta cleaner type 191.2

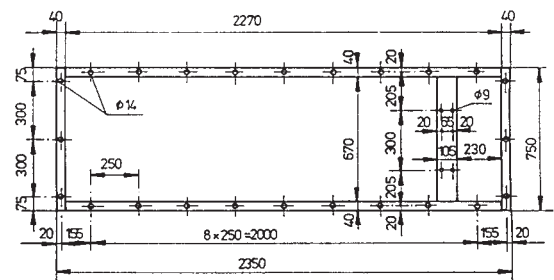
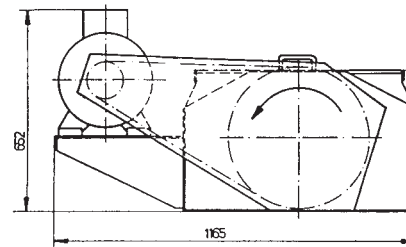
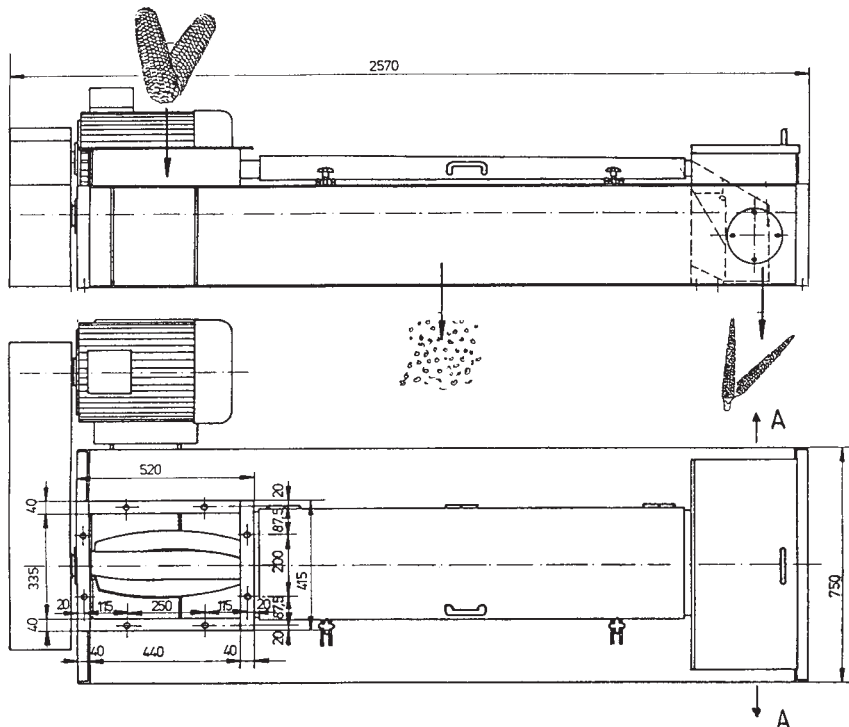
The machine is complete with 3 rows of screens with 1.250 mm working width.

Total of 9 m² screen area.

The 2 top layers of screens will work as scalping decks with discharge trays at the front of the machine.

1 layer of sand screens in the bottom.

Complete with 2.2 kW fix speed motor placed on the right side for the eccentric system.



CIMBRIA HEID GmbH

Heid-Werkstrasse 4
A-2000 Stockerau, Austria
Phone: (+43) 2266 699
Fax: (+43) 2266 655 90

E-mail: heid@cimbria.at
Internet: www.cimbria.com

